

# Year 7 Homework

## Independent Artist Research Project



- In this independent project, you will **research**, **analyse** and **respond** to artwork.
- You will have a couple of weeks to complete the project.
- You need to complete **all** the tasks.
- There will be **achievement points** awarded for excellent effort and outstanding work!
- There will be multiple achievement points for the students who try the challenge tasks (look at the challenge task slide before you start!)
- The **due date** for your class will be on **Show My Homework**.

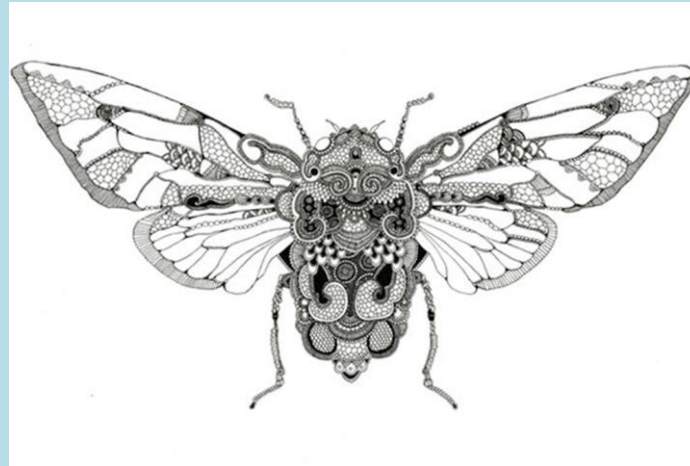
**Enjoy your research and good luck!**

## Task 1:

- Chose one of the artwork pictured below
- Create a copy of your chosen artwork



**Dürer**  
**Stag Beetle**  
**Watercolour**  
**1505**



**Rosalind Monks**  
**Untitled**  
**Digital art**  
**2011**



**Levon Biss**  
**Untitled**  
**Photography**  
**2020**

## Task 2:

Write an analysis of your chosen artwork.  
Use the Describe, Analyse, Interpret and Judge framework.



You will have done something like this in class. Use the writing template on the next slide to help you .

### Describe

When you describe an artwork, identify things in the work that you can see, name, and describe. Think of it as if you were trying to describe the work to a blind person

### Analyse

When you analyze an artwork you will tell how the subject matter and elements of the work have been organized. To do this, think of the elements of art — line, shape, form, and colour.

DAIJ



### Interpret

Use the information from your description and analysis (and secondary sources like the internet) to help identify the meaning of the artwork

### Judge

What is your conclusion? How well does it 'work'? How does the work awaken your imagination or help you feel a part of the work?

## **Describe**

*Imagine you are talking to someone on the phone who cannot see the artwork. Try to give a detailed description.*

In this artwork, I can see...

## **Analyse**

***HOW is the image made?***

Think about the elements of art.

E.g. Colour, tone and composition.

### **Colour**

The colours used

.....

How would you describe these colours?

### **Composition (the layout)**

My eye is drawn towards .....

This is because .....

### **Tone**

Tone is used to create .....

### **Materials**

The artist used

## **Interpret**

***What are the ideas behind the artwork?***

***What story is it telling?***

I think the artist is exploring the ideas.,,

From my research, I have learnt that ....

The artwork is about...

It makes me think about...

The artist is saying...

The mood of the artwork is (calm, violent, sad, joyful, angry, hopeful, scared etc.)

## **Challenge**

The artist wants the viewer to see...

The artist wants the viewer to think about...

The artwork reminds me of...

If I could ask the artist a question, I would like to ask...

I think the artist is making a comment on ( environmental/social/political/historical issues – think about the context of the artwork)

The symbols or metaphors in the painting represent ... (Use your artist research to help you answer this and read about articles about the artwork)

## **Judge**

***Your opinion of the artwork***

***Try to use your answers from Describe, Analyse or Interpret.***

The strengths of the work are ...

The weaknesses of the work are...

The artist communicates ideas by...

I discovered ...

## Task 3:

### Experimentation

To create a colour pencil drawing of a beetle



Medium – Colour Pencil or felt tips

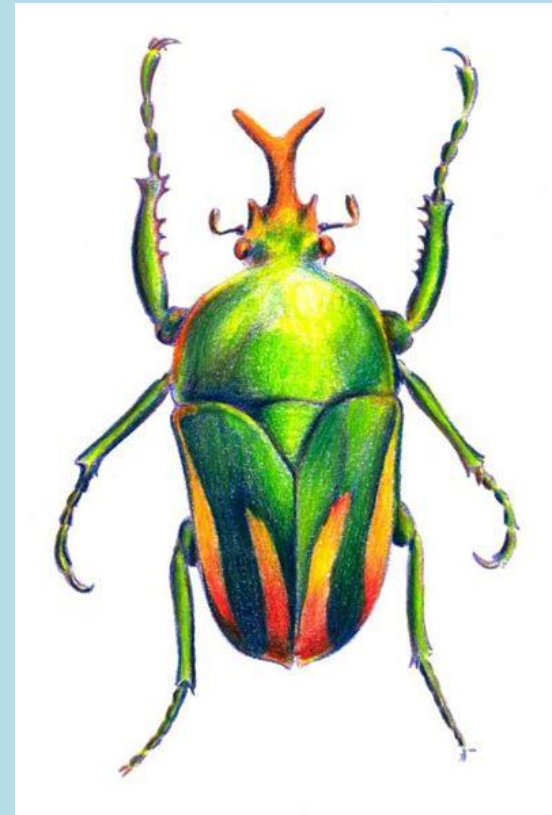
Element – Colour

Technique – Blending

Summary – In this experimentation, I discovered...

Look at this link to help you –

[https://www.artyfactory.com/drawing\\_animals/how\\_to\\_draw\\_a\\_beetle.htm](https://www.artyfactory.com/drawing_animals/how_to_draw_a_beetle.htm)



## Task 4:

Create your own version of your chosen artwork.



**Create own version of your chosen artwork (either Durer, Monks or Biss).**

**Create your own version using the artists style yet a different insect.**

**For example, for Monks, you could a draw a bee with patterns inside the bee in style**



**Complete your METS**

Medium - ?

Element - ?

Technique – ?

Summary – ?

## Challenge tasks – independent research skills:



- You could choose two artworks to compare and contrast.
- You could do additional research about the artist and find some more examples of their work.
- Could you find an article and youtube video about the artist? How could this help your analysis of the artwork?
- Could you experiment with the same materials that the artist uses? How could be inspired by their techniques?
- You could find an **additional** artwork that **you** would like to study. You could use the following websites to find artists/artwork:

<https://artuk.org/>

<https://www.saatchiart.com>

<https://www.tate.org.uk/>